

Montgomery County

Auditor



Karl L. Keith

Section Corner Monument Documents
access courtesy of

Montgomery County Auditor's Office

Documents are to be used as public general information and is provided strictly as a courtesy. No warranty as to the content, accuracy or completeness of any information provided herein.

UNION RD & 725

SECTION CORNER 1

SECTION 3, 4, 9, 10 MIAMI TWP

T2, R5E

8/5/2004

J. STEWART

J. POSTON

N. OAKS

4P DATED 6/23/09
JRS

* BEARING SHOWN
BASED ON OHIO STATE PLANE
COORDS NAD83(1996)
ALL DISTANCE SHOWN
ARE GROUND DISTANCE

SECTION 4

SECTION 3

STATE PLANE COORDINATES

SL602A - SPK

N=603769.39

E=1459136.18

ELEV=865.63

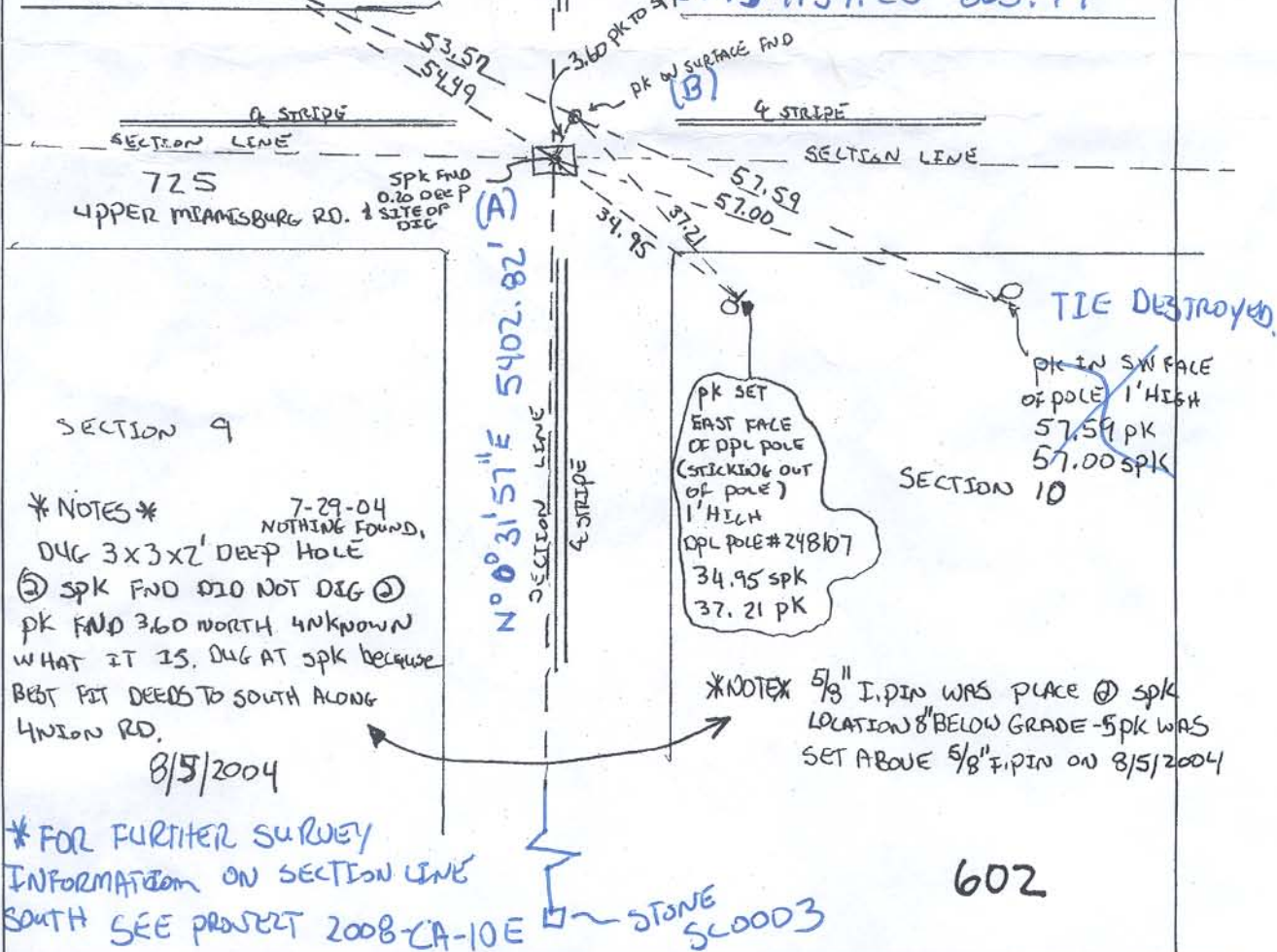
SL602B MAG RESET

N=603772.79

E=1459137.25

ELEV 865.79

PK SET IN SOUTH FACE
OF 3' HIGH DPL POLE
53.57 PK
54.49 SPK



* NOTES *

7-29-04
NOTHING FOUND,

DUG 3X3X2' DEEP HOLE

③ SPK FND DID NOT DIG ②

PK FND 360 NORTH. UNKNOWN

WHAT IT IS. DUG AT SPK BECAUSE

BEST FIT DEEDS TO SOUTH ALONG

UNION RD.

8/5/2004

*NOTEX 5/8" I.PIN WAS PLACED @ SPK
LOCATION 8" BELOW GRADE - SPK WAS
SET ABOVE 5/8" I.PIN ON 8/5/2004

* FOR FURTHER SURVEY
INFORMATION ON SECTION LINE
SOUTH SEE PROJECT 2008-CA-10E

STONE
SC0003

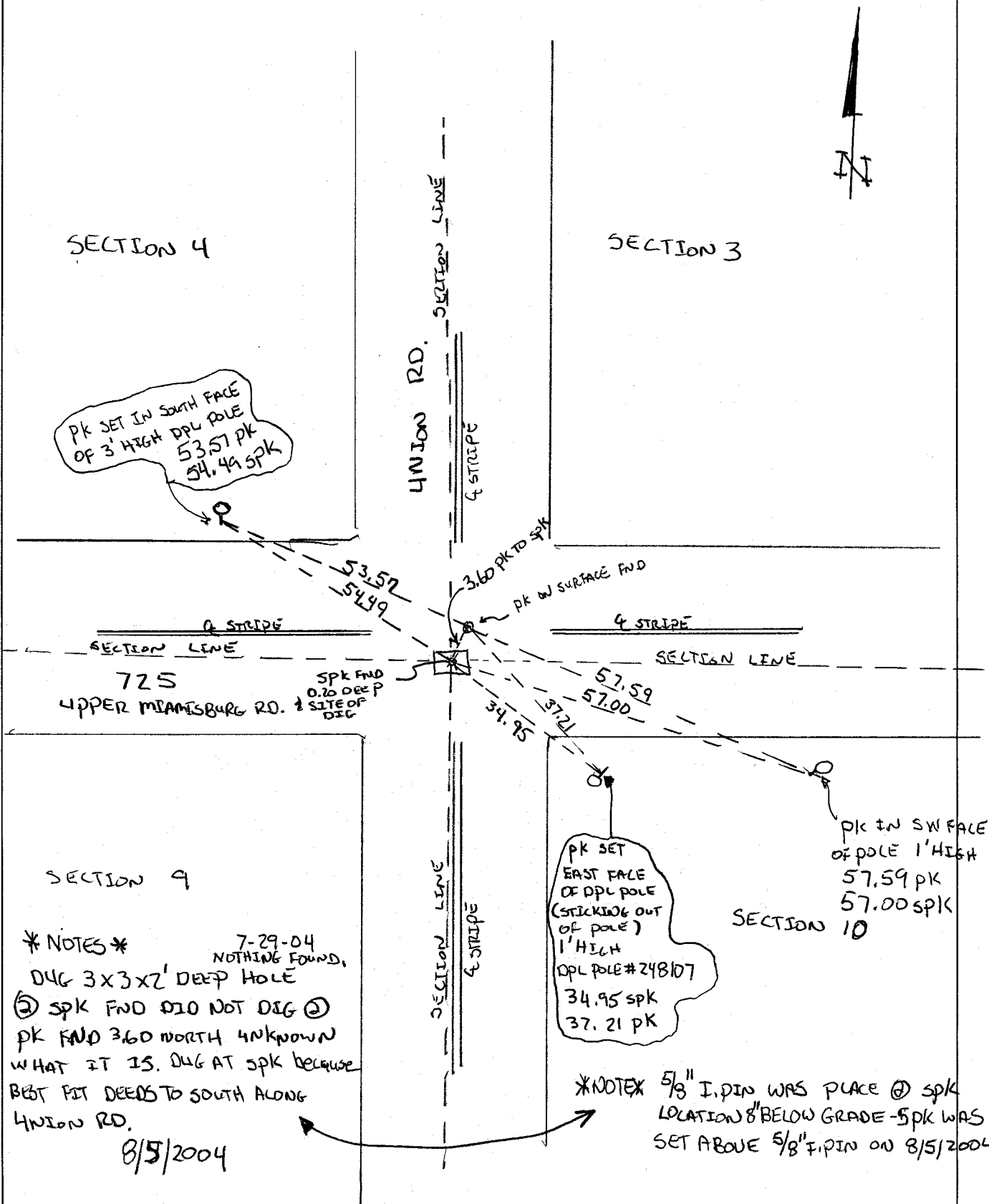
602

UNION RD & 725
SECTION CORNER 1

SECTION 3/4, 9, 10 MIAMI TWP
T2, R5 E

8/5/2004

J. STEWART
J. POSTON
N. DAKS



MONTGOMERY COUNTY SECTION CORNERS VALUES

Project : MCGPSCON99

User name	StewartJ	Date & Time	7:46:50 AM 7/2/2009
Coordinate System	US State Plane 1983	Zone	Ohio South 3402
Project Datum	NAD 1983 (Conus)		
Vertical Datum		Geoid Model	GEOID99 (Conus)
Coordinate Units	US survey feet		
Distance Units	US survey feet		
Height Units	US survey feet		

?

NAME	NORTHING	EASTING	ELEVATION
	LATITUDE	LONGITUDE	HIEGHT
DESCRIPTION			
NOTES			
LOCATED BY USE OF			
COMBINE SCALE - GRID TO GROUND CONVERSION FACTOR = (1/COMBINE SCALE X GRID DISTANCE = GROUND DISTANCE)			
SC0602A	603769.390sft	1459136.180sft	865.630sft
	39°38'37.32963"N	84°18'32.22319"W	756.228sft
SR725 & UNION RD			
SPK FND 3.60 SW OF MAG SC0602B			
VRS TENATIVE			
0.99991004			
SC0602B	603772.790sft	1459137.250sft	865.790sft
	39°38'37.36344"N	84°18'32.21038"W	756.388sft
UNION RD & SR 725			
MAG FND 3.60 NE OF SPK SC0602A			
VRS TENATIVE			
0.99991003			

[Back to top](#)